

BELL

www.bellequipment.co.uk

E-series wheeled loading shovels

Harsh environment corrosion protection



FREephone 0800 915 7700
sales@bellequipment.co.uk

Strong Reliable Machines
Strong Reliable Support

Protection of Bell machines

- **Paintwork and engine protection** – a 40 micron, hard, heat resistant, clear lacquer, resistant to both alkali and acids.
- **Underside of cab access platforms and rear fenders protected** - a 500 micron thick, tough, elastic black / brown coating, provides heavy duty protection
- **Brake pipes, hose ends and zinc plated items protection** - a 500 micron thick, tough, elastic black / brown coating, provides heavy duty protection
- **Unique oil immersed park brake** – eliminates park brake seizure
- **Engine cover latches sprayed with cavity wax** – penetrates the workings of the latches to protect against corrosion
- **Cab door / window hinges and engine cover hinges protected with cavity wax** – penetrates the hinges to prevent seizure
- **Radiators, heater and air conditioning matrix are epoxy coated** – prevents corrosion of the radiators
- **Mechanical fasteners protected** – a 500 micron thick, tough, elastic black / brown coating, provides heavy duty protection to nuts, bolts and washers
- **Sealed Electrical components** – sealed electrical connectors are further treated with sealing tape
- **Marinised alternator**
- **Keyless fuel tank and hydraulic tank covers** – plastic type caps prevent seizure
- **Solid state in – cab switchgear** – totally sealed switches for electrical reliability
- **Keyless security code ignition system** – eliminates corrosion associated with copper components inside the barrel of a key type ignition switch
- **Auto greasing system with corrosion proof fittings** (optional equipment)



Protection in more detail



- Complete machine is sprayed with Dinitrol 4010 to protect the paintwork against corrosion.

Dinitrol 4010 is sprayed to a 40 micron thickness and produces a hard heat resistant, clear coating that is resistant to both acid and alkali.



- The engine is also sprayed with Dinitrol 4010 to protect the paintwork against corrosion.

Dinitrol 4010 is specially developed to be used on surfaces that are exposed to both high and low temperatures. It will withstand temperatures up to 200°C

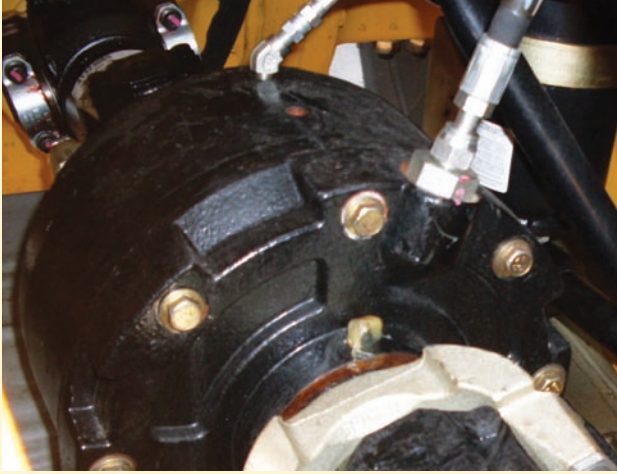
- All radiators in the Quad cool system, the heater and air condition condenser matrix are all epoxy dipped to protect them from corrosion



- Cab door and window hinges, engine cover and access door hinges are all treated with cavity wax to prevent seizure.



Protection in more detail



- Unique oil immersed park brake eliminates seizure as the brake is fully enclosed. Propshaft yokes, fasteners and brake line hose ends are treated with Dinitrol 4932.



- The machine is supplied as standard with sealed electrical connectors, these are then additionally treated with sealing tape.

- The alternator is marinised.



- Brake pipe fittings, hose ends and zinc plated items are painted with Dinitrol 4942. This is a thixotropic corrosion protection applied to a thickness of 500 micron, producing a black / brown finish for heavy duty corrosion protection.

This product is extremely heavy duty, typically used to protect the chassis of highway salt spreading trucks.

Protection in more detail



- Engine cover latches are all protected with Dinitrol 3125 cavity wax.

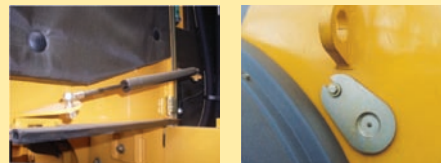
The product will not crack chip or peel and provides a brown waxy water repellent film to protect all surfaces from corrosion.

- Keyless diesel and hydraulic cap with plastic locking tabs prevent seizure.



- Details like the work light and beacon mountings, gas strut ends, pin retention plates, all fasteners are treated with Dinitrol 4942. This is a thixotropic corrosion protection applied to a thickness of 500 micron, producing a black / brown finish for heavy duty corrosion protection.

This product is extremely heavy duty, typically used to protect the chassis of highway salt spreading trucks.



- Totally sealed, solid state electrics ensure electrical integrity.
- Marine grade sealed in-cab switches significantly reduce in cab wires and connections for reliability in the harshest of environments. Bell reduced the cab harness by 100 wires when we upgraded from the old style rocker switches.
- Keyless security coded ignition eliminates corrosion associated with copper components inside the barrel of a key type ignition system.

E-series wheeled loading shovels

- **Highest standard specification in the market place.**
- **World class product, superb pedigree** – sold by Bell, manufactured in the USA by **John Deere** and after sales care from Bell's renowned product service.

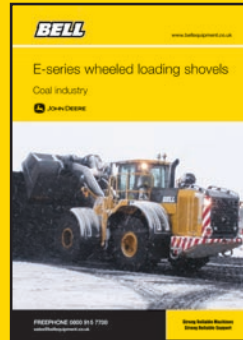
Standard equipment on Bell wheeled loading shovels:

- Quad Cool with Wide Core Radiators
- Cooling system air intake screens
- ROPS / FOPS cab structure
- Multi lever or joystick hydraulic control
- Fire Extinguisher
- Reverse Radar Object Detection
- Full Fender Guards
- Air conditioning system
- In board wet disc service brakes
- Flashing Beacon
- Auto Engine Idle
- 4000 Hour Hydraulic Filter Kit
- Hydraulic ride control
- Battery isolator
- Sealed in cab switches
- Embedded weigh system
- Convex and flat exterior mirrors
- Centralised hydraulic system test points
- 100% front axle differential lock
- 4 fwd / 2 rear facing cab roof mounted work lights
- LED arrays on indicator and brake light assemblies
- Ground level operator check & re-fuel point
- Whole machine lift points
- Radio / CD Player
- Deluxe Heated Seat with Twin Arm Rest
- In cab fuel level gauge
- Reverse Camera
- Engine air pre-cleaner
- In cab audible low fuel level warning
- Full belly guards
- Oil immersed park brake
- Reverse alarm
- Auto Engine Shutdown
- CESAR datatag registered
- Automatic reversing hydraulic cooling fan
- CANBUS control system
- Keyless Start with Security Code Lock Out
- Red and white rear chevrons
- Blue strobe reverse lights
- Axle coolers
- Traction control system

Other brochures in this range:



Agricultural industry



Coal industry



Ports and bulk storage



Quarry applications



Timber and biomass applications



Waste and recycling

Under our policy of continuous improvements, we reserve the right to change specifications and design without prior notice. Photographs featured in this brochure may include regional differences & equipment.



BELL EQUIPMENT UK LTD

Co. Reg No. 3591436 United Kingdom
A member of the worldwide Bell Equipment Group
Graycar Business Park, Barton Turns
Barton-Under-Needwood, Burton-on-Trent, Staffs DE13 8EN

Tel: 0800 915 7700

Fax: +44 (0) 1283 712687

Parts Dept: +44 (0) 1283 716777

Fax: +44 (0) 1283 712695

E-mail: general@uk.bellequipment.com

www.bellequipment.co.uk